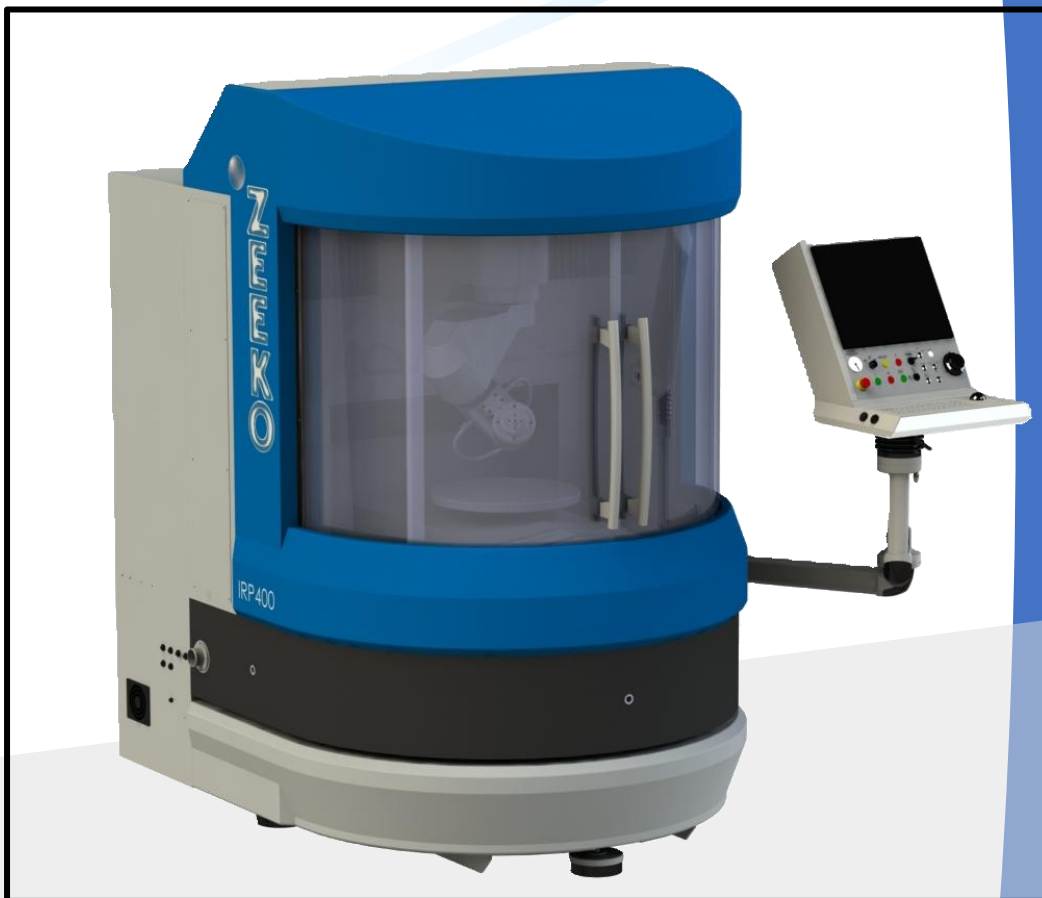


Specification Manual



IRP400 FL 7-axis

Version 4, Rev a

Apr2025

Contents

| | |
|---|----|
| Contents | 2 |
| 1. Liability Statement..... | 3 |
| 2. Machine description..... | 4 |
| 3. Arrangement of the axes | 5 |
| 4. Polymer granite machine base and bridge..... | 6 |
| 5. Linear axes | 7 |
| 5.1 X and Y axes | 7 |
| 5.2 Z axis | 7 |
| 5.3 Rotary axes & spindles..... | 8 |
| 6. Machine enclosures..... | 10 |
| 7. Control system..... | 11 |
| 8. Guards, covers & safety features | 11 |
| 9. Peristaltic pump system | 13 |
| 10. Zeekojet polishing (option) | 14 |
| 11. Summary specification | 15 |
| 11.1 General | 15 |
| 11.2 Linear axis | 16 |
| 11.3 Rotary axis..... | 17 |
| 12. Utilities specification | 18 |
| 12.1 Power supply | 18 |
| 12.2 Compressed air | 18 |
| 12.3 Environmental specification | 18 |
| 12.4 Contact..... | 19 |



1. Liability Statement

Zeeko (hereinafter referred to as “the Manufacturer”) warrants that the CNC machines are free from defects in materials and workmanship for a period of one year from the date of delivery. The Manufacturer will repair or replace, at its option, any defective CNC machine or part thereof, provided that the CNC machine is returned to the Manufacturer, or an authorized service engineer site visit is arranged, within the warranty period.

This warranty does not cover normal wear and tear, damage caused by improper installation, operation, maintenance, or modification, or any damage resulting from misuse, abuse, negligence, accident, or natural causes.

The Manufacturer’s liability under this warranty is limited to the repair or replacement of the defective CNC machine or part thereof, and does not include any incidental or consequential damages, such as loss of profits, loss of production, loss of data, or injury to persons or property. The Manufacturer disclaims any implied warranties of merchantability or fitness for a particular purpose, and any other warranties not expressly stated herein.

The Manufacturer is not liable for any direct, indirect, incidental, or consequential damages arising from the use or inability to use the CNC machines, whether based on contract, tort, or any other legal theory, even if the Manufacturer has been advised of the possibility of such damages. The Manufacturer’s maximum liability under any circumstances shall not exceed the purchase price of the CNC machine.

Some jurisdictions do not allow the exclusion or limitation of certain warranties or damages, so some of the above exclusions or limitations may not apply to you. This liability statement gives you specific legal rights, and you may also have other rights that vary from jurisdiction to jurisdiction.

By purchasing, installing, operating, or using the CNC machines, you agree to be bound by the terms and conditions of this liability statement. If you do not agree with this liability statement, do not purchase, install, operate, or use the CNC machines.



2. Machine description

The IRP400 is a 7 axis CNC optical polishing/form generating machine capable of producing ultra-precise surfaces on a wide range of materials and surface forms. The machine axes can be used for traditional spiral, raster, and free-form polishing.

- Mass = 2600 Kg
- Dimensions = 2100 x 1850 x 2275 (W x D x H mm)

The machine frame is a welded steel structure incorporating the following features:

- 3-point floor mounting
- Integrated electrical and pneumatics enclosures
- 3-point mounting for polymer-granite base
- Peristaltic System attached (optional)



3. Arrangement of the axes

The arrangement and definition of the 7 CNC axes is as follows:

- X is a linear axis which mounts horizontally to the polymer-granite bridge. The X-axis carriage is a precision machined steel structure
- Y is a linear axis comprising a precision machined steel structure, mounted on the polymer-granite base and aligned perpendicular to the X axis
- Z is a linear axis, precision machined steel structure, mounted vertically on the X axis and is aligned perpendicular to both the X and Y axes
- C is a rotational axis that holds the work piece. It is mounted on the Y-axis
- A, B and H are rotational axes configured such that the polishing head (H-axis) rotates through a point in space call the Virtual Pivot (VP). This three axis assembly mounts onto the Z-axis



4. Polymer granite machine base and bridge

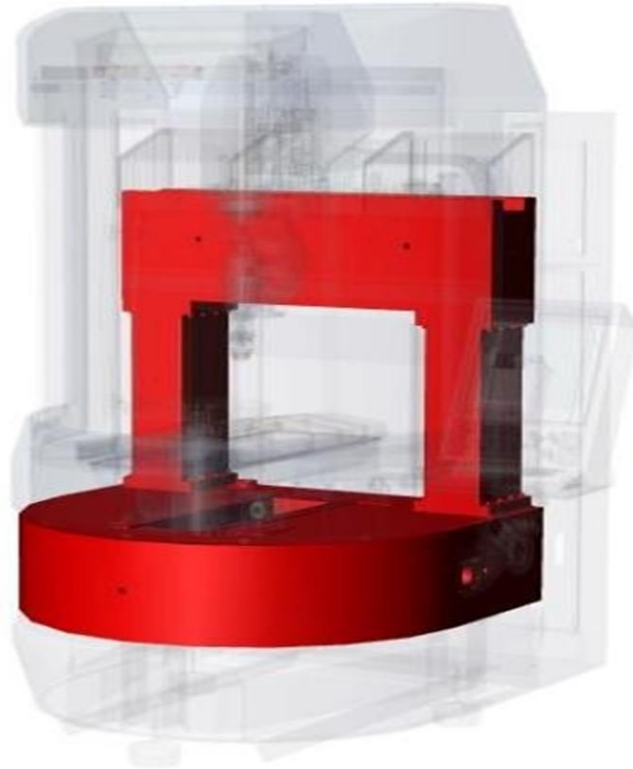


Figure 1 - Polymer granite base and & welded steel frame

The machine base and bridge are precision cast and machined polymer-granite composite structures that provide excellent thermal stability and vibration damping characteristics. This key machine element incorporates the following features:

- Moulded-in stainless steel inserts for mounting and alignment of the X and Y axes and for machine handling and transportation
- Threaded stainless steel inserts for mounting the polishing enclosure
- Moulded-in feeds for electrical supply and control cables, compressed air, and slurry supply and return

5. Linear axes



Each axis is mounted on a pair of precision linear motion rails and driven via an AC servo. Glass scale linear encoders are used on each linear axis (Z optional) for positional accuracy.

5.1 X and Y axes

The X and Y axes are driven by Fanuc linear motors and do not require ballscrews for drive. Positional feedback is by precision glass scale encoders.

- Slide type: THK or INA linear motion rails
- Travel (X-axis): ± 275 mm
- Travel (Y-axis): ± 250 mm
- Drive system: Fanuc linear AC servomotor
- Positioning feed-back: Precision glass scale encoder
- Max velocity: 3000 mm/min

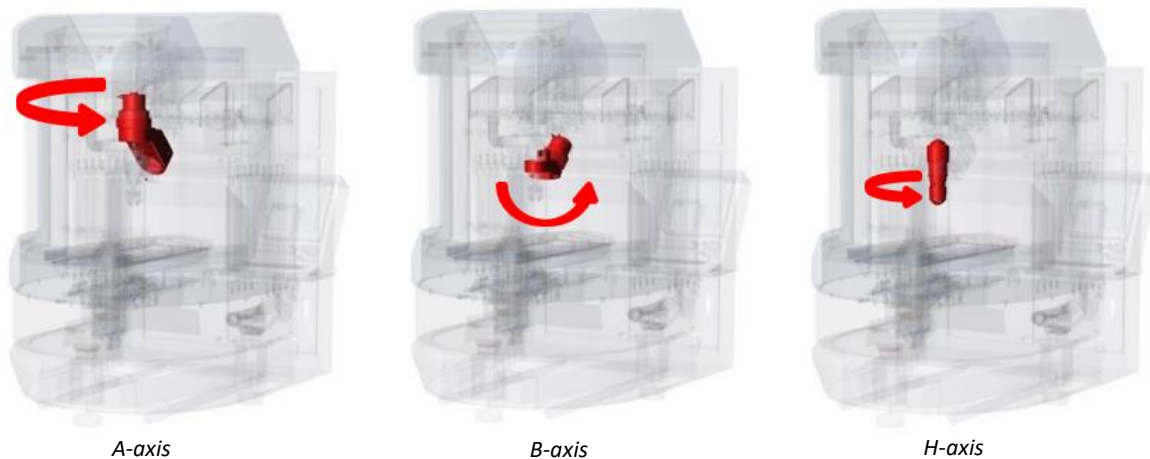
5.2 Z axis

The Z-axis drive is provided by a ballscrew drive using a Fanuc AC servomotor coupled to a linear glass scale encoder.

- Slide Type: THK or INA linear motion rails
- Travel: 250 mm
- Drive: Fanuc AC servo motor c/w pulse coder
- Positioning feed-back: Precision glass scale encoder
- Max velocity: 3000 mm/min

5.3 Rotary axes & spindles

The A, B & H axes provide the primary tool motions and are often referred to as the Virtual Pivot (VP). The VP is mounted directly to the polymer-granite base.



The A-axis is mounted to the Z-Axis via an AC servo drive Harmonic Drive unit with enhanced radial stiffness. Referencing of the position is via a non-contact referencing element. Referencing is only required following power up of the machine.

- Rotational Range: $\pm 270^\circ$
- Max Rotational Velocity: 25 rpm

The B axis is mounted to the A axis via AC servo driven Harmonic Drive unit. Referencing of the position is via a non-contact referencing element. Referencing is only required following power up of the machine.

- Rotational Range: $\pm 180^\circ$
- Max Rotational Velocity: 25 rpm

The H axis forms the tool holding spindle and is mounted to the A & B axes and completes the virtual pivot assembly. Drive is provided via a DC frameless motor with position feedback from a rotary encoder. The spindle is cooled by an external chiller system. Tooling mounts via a $\varnothing 25$ mm hydraulic chuck. The H axis also integrates a load cell arrangement to facilitate part probing essential for process stability and part/machine referencing.

- Speed Range: 10 to 2500
- Polishing Head radii: Solid or Inflatable R20, R40, Inflatable R80, (Solid R2, R5, R10 optional)



C-axis / spindle

The C-axis forms the work piece mounting spindle and is mounted to the Y-axis. The axis consists of rolling element bearings driven by a brushless DC servo motor, with positional feedback provided by a precision absolute encoder. The spindle is cooled by an external chiller system.

The Spindle is supplied with a Ø450 mm turntable and Ø40 mm hydraulic chuck for work piece mounting.

- | | |
|--------------------------|---|
| ■ Speed Range: | 0 to 400 rpm |
| ■ Speed Range (optional) | 0 to 1000 rpm (optional upgrade and with chuck only fitted) |
| ■ Max Load Capacity: | 50 kg |
| ■ Vacuum (Optional): | -0.8 bar maximum |

6. Machine enclosures

The Machine enclosures are provided as follows:

- Uncoated stainless steel polishing enclosure (internal surfaces)
- Slurry return drain passing through the granite base
- Slide protection for the X, Y, and Z axes
- Isolated machine electrical and pneumatic systems
- Maintenance access to X, Y, and Z axes



7. Control system



Figure 2 - Control console

Zeeko Fanuc (30i-B) System

- Industrialised PC with 15" Touch Colour LCD Screen with Softkeys
- Multi-axes interpolation (export controlled) with cubic, polynomial, and Bspline (NURBS) capability
- Designation of control paths: 1 path
- Least Command Increment: 1 μm
- Processor: Panel i - Windows 10 embedded OS
- Data Server option for up to 4GB NC programs

8. Guards, covers & safety features

The equipment specified herein shall conform to requirements of EC and international safety regulations as required by current legislation.

Cover and guards will be provided to protect the operator from:

- Moving machine parts
- Slurry and spray

Covers will also protect machine elements from:

- Slurry and fluids
- Airborne dust and debris

Electrical interlocks will prevent opening of:

- The polishing enclosure door when the machine is in cycle
- Electrical cabinet when the machine is energised

An emergency stop button readily accessible to the machine operator.



9. Peristaltic pump system

The Zeeko mounted peristaltic slurry delivery system can be used to supply polishing slurry in either a closed loop or open loop, total loss system.

High flow rate Pump specification (recirculating or total loss):

- Flow rate: Min flow rate: 75 ml/min
 Max flow rate: 280 ml/min
- Reservoir capacity: 1 litre
- Tube Type: Ø4.8 mm Masterflex PharMed BPT
 Long life, high acid/alkali resistance
- Agitation method: Magnetic stirrer

Low flow rate pump specification (recirculating or total loss):

- Flow rate: Min flow rate: 8 ml/min
 Max flow rate: 30 ml/min
- Reservoir capacity: 1 litre
- Tube Type: Ø1.6 mm Masterflex PharMed BPT
 Long life, high acid/alkali resistance
- Agitation method: Magnetic stirrer



10. Zeekojet polishing (option)

H-axis is a “combo head” capable of classic polishing and additionally Fluid Jet Polishing (FJP). FJP specification is as follows:

- Bonnet and hydraulic chuck are removed and optional FJP adaptor is assembled. Adaptor has removable probe for probing routines
- Nozzle bore range available: 0.25, 0.5, 1.0, 1.5 mm
- Maximum rated pressure is 20 bar



11. Summary specification

11.1 General

| General | Description |
|--|---|
| System Configuration | 7 Axis CNC Optical Polishing Machine constructed on Polymer Granite Machine Base and Bridge, capable of producing ultra-precise surfaces on a variety of optical materials and surface forms. |
| Work piece Capacity (1) | Nominal polishing envelope of 550 x 500 x 250 mm |
| Base Structure | Polymer Granite |
| Control System | Fanuc |
| Dimensions (No Accessories) W x D x H | 2100 mm x 1850 mm x 2275 mm |
| Suggested Install Dimensions | 3100 mm x 3850 mm x 2400 mm |
| Weight | 2600 Kg |
| Floor Load Requirements | Minimum loading 100,000 Kg/m ² Floor must be even to <3 mm/m ² |
| Environmental Requirements Min/Max Operating Temp. Max Operating Humidity Min/Max Storage Temp. Max Storage Humidity | 20 °C +/- 1 °C (< 2 °C/hour Temperature Gradient) 75 % RH Non-Condensing -15 °C – 50 °C 80 % RH Non-Condensing |
| Power Supply Requirements | 3 Phase + E, 380 – 430 VAC 50/60Hz 10 kW (customer must supply a power supply or transformer to meet this specification) |
| Services Requirements | Clean dry air at 185 lit. / min with minimum pressure of 6 bar (215 lit. / min with linear encoders) |
| Noise Level | <50 dB(A) Continuous |
| Safety | In accordance with EC Directives 2006/42/EC, 2004/108/EC (EMC) and 2006/95/CE (Low Voltage) |



11.2 Linear axis

| Description | X | Y | Z |
|---|---|--|---|
| Slide Type | THK or INA Linear Motion Rails | THK or INA Linear Motion Rails | THK or INA Linear Motion Rails |
| Dri | Fanuc AC linear servo motor | Fanuc AC linear servo motor | AC Servo driven Ø35-6 precision grade-C5 ballscrew |
| Feedback Type | Glass scale linear encoder | Glass scale linear encoder | Motor mounted position encoder or optional glass scale linear encoder |
| Travel | ±275 mm | ±250 mm | +5 mm -245 mm Max VP–Turntable Distance = (296) mm Min VP – Chuck Face Distance = (45) mm |
| Max Velocity | 3000 mm/min | 3000 mm/min | 3000 mm/min |
| Max Acceleration | 250 mm/sec ² | 250 mm/sec ² | 250 mm/sec ² |
| Positioning Accuracy | <10 µm over full travel | <10 µm over full travel | <10 µm over full travel |
| Bi-direction Repeatability | < 5 µm | < 5 µm | <5 µm |
| Straightness: Horizontal: Vertical: | <10 µm over full travel <5 µm over 100mm | <10 µm over full travel <5 µm over 100 mm | <10 µm over full travel <5 µm over 100 mm |
| Squareness | <50 µ/m | <50 µ/m | <50 µ/m |
| Circularity | <50 µm | <50 µm | <50 µm |
| | | | |



11.3 Rotary axis

| Rotary Axes | A | B | H (Tool) | C (Workpiece) |
|------------------------------------|--|-----------------------------|-------------------------------|---|
| Mounting | Epoxy-Granite Base | A Axis Arm | Virtual Pivot Assembly | Z Axis Carriage |
| Spindle/Axis | Axis | Axis | Spindle | Spindle & Axis |
| Cooled | Not Req'd | Not Req'd | Yes | Yes |
| Integral Services | N/A | N/A | Air (STD)/FJP (Optional) | Vacuum (Optional) |
| Probing | N/A | N/A | 125N Load Cell | N/A |
| Drive | Harmonic Drive Direct Drive | Harmonic Drive Direct Drive | DC Frameless Direct Drive | DC Frameless Direct Drive |
| Feedback Type | Motor Encoder | Motor Encoder | Rotary Encoder, 5000lines/min | Absolute Encoder |
| Speed Range | 0-25 rpm | 0-25 rpm | 0-2500 rpm | 0-400 rpm (table) 0-1000 rpm (chuck only) |
| Load Capacity | N/A | N/A | N/A | 50 Kg |
| Maximum Inertial Load ¹ | | | | 2.0 Kg*m ² @239 rad/s ² |
| Positional Repeatability @ Motor | ±1 arcmin | ±1 arcmin | - | ±1 arcmin |
| Working Range | ±270 ° | ±180 ° | Continuous-bidirectional | Continuous-bidirectional |
| Radial Run-Out | Rotation of VP Setting ball mounted in H-axis Chuck and rotated about the Virtual Pivot < 40µm | | | <5 µm |
| Axial Run-out | | | | <10 µm |

¹ Maximum Inertial load in standard configuration. Variations may be possible with servo retuning – contact Zeeko for advice.



12. Utilities specification

12.1 Power supply

The machine is designed for operation on 3-phase, 4 wire systems (i.e. 3 phases + Earth). The machine can accept the following mains voltage:

- 3-phase + Earth, 380 – 430 V AC, 50 or 60 Hz. 10 kW capacity.

If the local electrical power supply standard does not meet this specification, then an electrical power transformer must be used between the local electrical supply and the IRP machine to the following output-side recommendation:

- 400 V AC 3-phase + Earth, 50 or 60 Hz with 10 kW capacity.

The 10 kW rating is nominal and may be affected by customized design requirements. If this is the case, then Zeeko will notify customers at the time of ordering.

12.2 Compressed air

The IRP machine operates with compressed air to fulfil the following functions. Mist separators are fitted internally to all machines.

- Air purges to axes and joints exposed to polishing slurries
- Linear encoder air purges
- Bonnet (polishing tool) air pressure
- Vacuum systems for vacuum work holding where fitted (chucks)
- Pneumatic systems for the control of fluid systems
 - Minimum input pressure 6 bar
 - Maximum input pressure 8 bar
 - Volumetric requirement 215 l / min (air purges to max.)

12.3 Environmental specification

The IRP 400 must be installed inside a room with the following characteristics:

Temperature and humidity

| | |
|----------------------------|------------------------|
| Operating Temperature: | 20 °C +/- 1.0 °C |
| Max. Operating Humidity: | 75% RH, non-condensing |
| Storage Temperature: | -15 – 50 °C |
| Max. Storage Humidity: | 80 % non-condensing |
| Max. Temperature Gradient: | <2 °C / hour |
| Recommended Temperature: | 21 °C ± 0.5 °C |



Cleanliness

The IRP machines do not require siting in an ISO class cleanroom. However, we recommend that the machine is sited in a separate room to:

- Rooms containing conventional milling and grinding machines
- Rooms containing diamond turning machines
- Rooms subject to metal swarf or grinding dust
- Rooms subject to any other processes that generate airborne particulate matter

The room should be clean, but not necessarily a clean-room as classified by ISO. IRP machines typically use Cerium Oxide slurry as the polishing medium and when this dries on surfaces, it can produce a dust which would be classed as a contaminant in ISO-class cleanrooms. It is for this reason we recommend that if you require the rooms to be clean, you adhere to practices for cleanrooms of ISO class 8 or 9, but without the rigorous filtering required. The resulting air changes and also cleanliness protocols will ensure a room that is clean to a very high standard.

Room vibration requirements

Each IRP machine is equipped with passive vibration isolation feet. The IRP600 is no different in this respect. In order to ensure best results, we recommend a vibration environment corresponding to:

Residential Day (ISO)

12.4 Contact

For more information, please visit our website <http://www.zeeko.co.uk> or contact us via the following:

Zeeko Ltd. | 4 Vulcan Court | Vulcan Way

Coalville | Leicestershire | LE67 3FW | UK

+44 1530 815 832

info@zeeko.co.uk

sales@zeeko.co.uk

